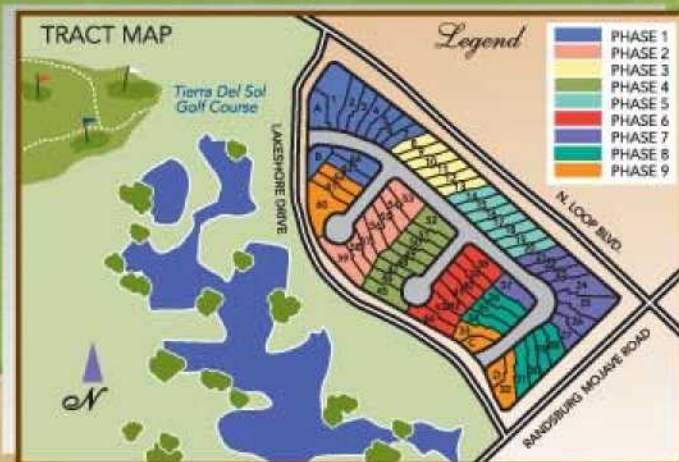
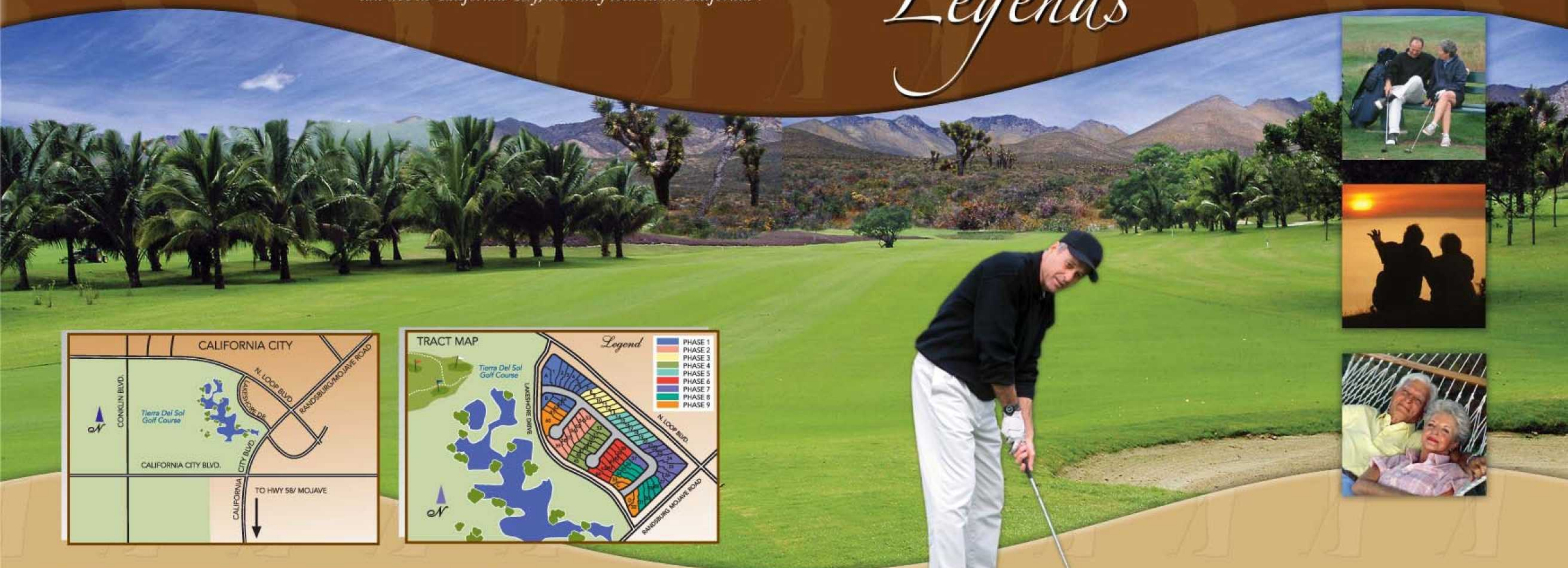


*Why pay high home prices in Nevada, Arizona, New Mexico or even Palm Springs for Adult retirement living, when you can live in California City, centrally located in California.*

# HIGH DESERT Legends

NEW HOMES PRICED FROM THE MID 200'S



CONTACT AL GAGNON - CALIFORNIA CITY REAL ESTATE  
 20301 SOUTH CALIFORNIA CITY BLVD. - CALIFORNIA CITY CA 93505  
 PHONE: (760)373-4567 - FAX: (760)373-4444 - HIGHDESERTLEGENDS.COM

## HIGH DESERT Legends

*— “We help families realize the American Dream. Let us help you find your Affordable Dream Home in California City!”*

*High Desert Legends, an adult community near the Tierra Del Sol PGA Championship Golf Course in California City, California, includes a unique, master planned gated community of unique and affordable garden homes.*

## Impressive Interiors

- 16" Porcelain tile flooring in entry, kitchen, nook, all baths and utility room
- Plush designer carpeting in selection of contemporary colors
- Rounded drywall corners
- Antique nickel interior door lock sets
- Attractive recessed lighting
- Digital display, programmable thermostat
- Contemporary rocker light switches
- Large walk-in closets at master bedroom
- Built in entertainment center
- Solar Tubes
- High ceilings
- Crown moldings
- Distinctive 8' interior doors

## Innovative Interiors

- Ceiling fans in all bedrooms and family room
- Pre-wired for RG-6 and CAT 5 wiring in all bedrooms
- Smoke detectors
- 50-Gallon gas water heater
- Finished garage with fluorescent lighting

## Family Comfort and Safety

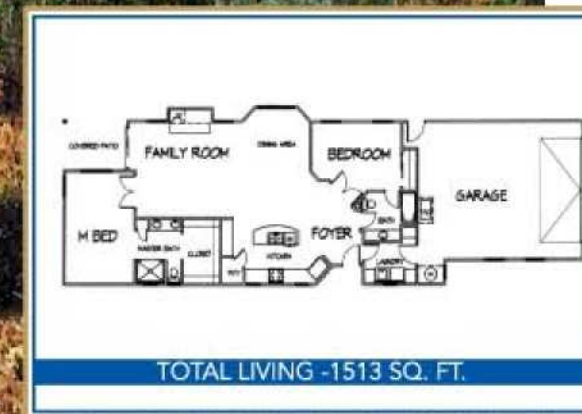
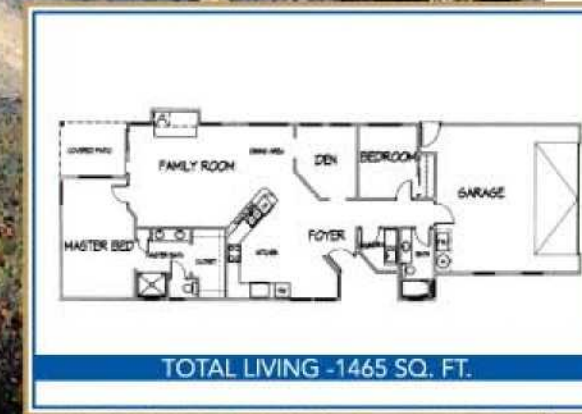
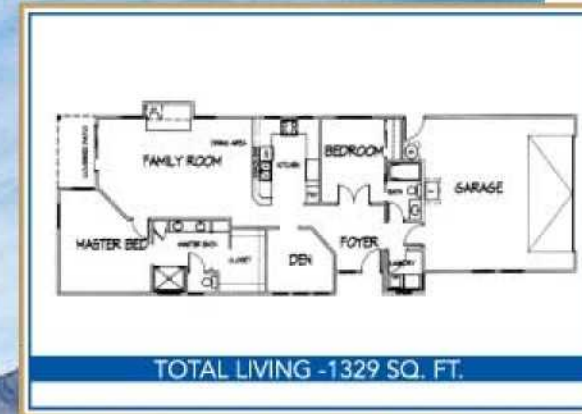
- R-19 insulation in all exterior walls of living space
- Low E, dual-pane, vinyl glass windows and sliding glass doors
- HVAC sealant and duct testing
- R-38 Attic insulation
- Solar Attic Fans

## Gourmet Kitchens

- Custom cabinets with fully concealed hinges and stain finish
- Granite counters in selection of designer colors
- Kenmore® Stainless 36" stove & oven
- Kenmore® built-in microwave
- Kenmore® built-in dishwasher
- Two-compartment, undermount stainless sink with waste disposal
- Moen® pullout faucet with pivot-action control
- Convenient brushed nickel lighting



*This active adult community will feature guest areas with spa and BBQ facilities, block wall perimeter, electronic gates, curbs, rain gutters, sidewalks, street lighting, natural gas, sewer, city water, and trash pick-up.*



## Plush Master Suites

- Custom cabinets with fully concealed hinges and stain finish
- Kohler® sinks
- Moen® brushed nickel fixtures and bath accessories
- Luxurious granite shower
- Granite counter
- Compartmentalized walk in closet
- Linen closet
- Natural stone floors

## Stylish Guest Baths

- Custom cabinets with fully concealed hinges and stain finish
- Kohler® sinks
- Moen® brushed nickel fixtures and bath accessories
- Ceramic Tile Counter
- Tile Floors

## Convenient Interior Laundry

- Custom cabinets with fully concealed hinges and stain finish
- Linen closet

## Distinctive Exteriors

- Spanish architecture with stucco fascia
- Distinct exterior designs for each home plan
- Spanish concrete roof tile
- Front yard landscaping with automatic sprinklers
- Durable, fire resistant concrete roof tiles
- Antique nickel entry door handle and deadbolt lock set
- Textured steel, sectional garage door with windows and automatic opener
- Finished garage with fluorescent lighting
- Three hose bibs
- Gas barbecue stub at rear yard
- Backlit address identification fixture
- Slumpstone perimeter walls
- Covered Patio

*Seller reserves the right to change prices, floor plans, features and specifications without notice or obligation. All square footages of these new homes are approximate. Expected opening date or house features may change or vary.*